

## **Сграда за сепариране**

Partner for Contact:  
Order No.:  
Company:  
Customer No.:

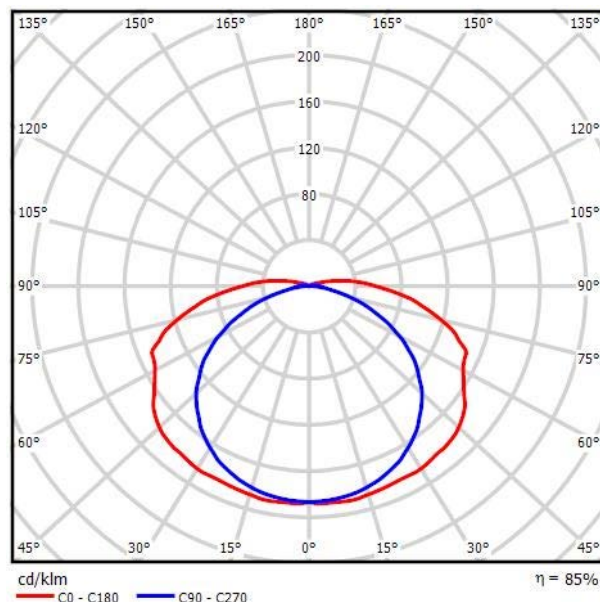
Date: 15.08.2014  
Operator:



Operator  
Telephone  
Fax  
e-Mail

## ESSYSTEM 2405000 CO2 249 / Luminaire Data Sheet

Luminous emittance 1:



Luminaire classification according to CIE: 95  
CIE flux code: 35 64 87 95 85

Ceiling mounted or pendant luminaire. Fluorescent tubes. Standard or dimmable electronic ballasts. Housing of grey PC. Clear PC diffuser. White reflector of steel sheet. Enclosed emergency pack installed on request. Suspensions not included. Industrial lighting, car parks, commercial facilities.

Luminous emittance 1:

| Glare Evaluation According to UGR                                |      |   |      |      |      |      |  |      |      |      |      |  |
|--|------|---|------|------|------|------|--|------|------|------|------|--|
| e Ceiling  |      | 70  | 70   | 50   | 50   | 30   | 70   | 70   | 50   | 50   | 30   |  |
| e Walls  |      | 50  | 30   | 50   | 30   | 30   | 50   | 30   | 50   | 30   | 30   |  |
| e Floor  |      | 20  | 20   | 20   | 20   | 20   | 20   | 20   | 20   | 20   | 20   |  |
| Room Size<br>X Y   |      | Viewing direction at right angles<br>to lamp axis |      |      |      |      | Viewing direction parallel<br>to lamp axis |      |      |      |      |  |
| 2H   | 2H   | 21.5  | 22.9 | 21.9 | 23.3 | 23.6 | 19.5                                       | 20.9 | 19.8 | 21.3 | 21.6 |  |
|  | 3H   | 24.6  | 25.9 | 25.0 | 26.3 | 26.7 | 21.3                                       | 22.6 | 21.7 | 23.0 | 23.4 |  |
|  | 4H   | 26.0  | 27.2 | 26.4 | 27.6 | 28.0 | 22.0                                       | 23.3 | 22.4 | 23.6 | 24.1 |  |
|  | 6H   | 27.3  | 28.5 | 27.7 | 28.9 | 29.3 | 22.5                                       | 23.6 | 22.9 | 24.0 | 24.5 |  |
|  | 8H   | 28.0  | 29.1 | 28.4 | 29.5 | 30.0 | 22.6                                       | 23.7 | 23.1 | 24.2 | 24.6 |  |
| 4H   | 12H  | 28.7  | 29.8 | 29.1 | 30.2 | 30.7 | 22.7                                       | 23.8 | 23.2 | 24.2 | 24.7 |  |
|  | 2H   | 22.2  | 23.4 | 22.6 | 23.8 | 24.2 | 20.8                                       | 22.0 | 21.2 | 22.4 | 22.8 |  |
|  | 3H   | 25.6  | 26.7 | 26.0 | 27.1 | 27.5 | 23.1                                       | 24.2 | 23.5 | 24.6 | 25.1 |  |
|  | 4H   | 27.2  | 28.1 | 27.6 | 28.6 | 29.1 | 24.0                                       | 25.0 | 24.5 | 25.5 | 26.0 |  |
|  | 6H   | 28.7  | 29.6 | 29.2 | 30.0 | 30.6 | 24.7                                       | 25.6 | 25.2 | 26.1 | 26.6 |  |
| 8H   | 12H  | 29.5  | 30.3 | 30.0 | 30.8 | 31.3 | 25.0                                       | 25.8 | 25.5 | 26.3 | 26.8 |  |
|  | 30.3 | 31.0  | 30.8 | 31.5 | 32.1 | 25.2 | 25.9                                       | 25.7 | 26.4 | 27.0 |      |  |
|  | 4H   | 27.6  | 28.5 | 28.1 | 28.9 | 29.5 | 25.2                                       | 26.1 | 25.8 | 26.6 | 27.1 |  |
|  | 6H   | 29.5  | 30.1 | 30.0 | 30.7 | 31.2 | 26.4                                       | 27.1 | 27.0 | 27.6 | 28.2 |  |
|  | 8H   | 30.4  | 31.0 | 31.0 | 31.6 | 32.2 | 26.9                                       | 27.5 | 27.5 | 28.1 | 28.6 |  |
| 12H  | 12H  | 31.5  | 32.0 | 32.0 | 32.6 | 33.2 | 27.3                                       | 27.8 | 27.9 | 28.4 | 29.0 |  |
|  | 4H   | 27.7  | 28.4 | 28.2 | 29.0 | 29.5 | 25.5                                       | 26.3 | 26.1 | 26.8 | 27.3 |  |
|  | 6H   | 29.6  | 30.2 | 30.2 | 30.8 | 31.4 | 26.9                                       | 27.5 | 27.5 | 28.1 | 28.7 |  |
|  | 8H   | 30.7  | 31.2 | 31.3 | 31.8 | 32.4 | 27.6                                       | 28.1 | 28.1 | 28.7 | 29.3 |  |
| Variation of the observer position for the luminaire distances S |      |   |      |      |      |      |  |      |      |      |      |  |
| S = 1.0H   |      | +0.1 / -0.1                                       |      |      |      |      | +0.1 / -0.1                                |      |      |      |      |  |
| S = 1.5H   |      | +0.2 / -0.3                                       |      |      |      |      | +0.2 / -0.2                                |      |      |      |      |  |
| S = 2.0H   |      | +0.3 / -0.4                                       |      |      |      |      | +0.4 / -0.6                                |      |      |      |      |  |
| Standard table   |      | BK12  |      |      |      |      | BK13                                       |      |      |      |      |  |
| Correction   |      | 6.9   |      |      |      |      | 2.0  |      |      |      |      |  |
| Summand  |      |   |      |      |      |      |  |      |      |      |      |  |
| Corrected Glare Indices referring to 8600lm Total Luminous Flux  |      |   |      |      |      |      |  |      |      |      |      |  |

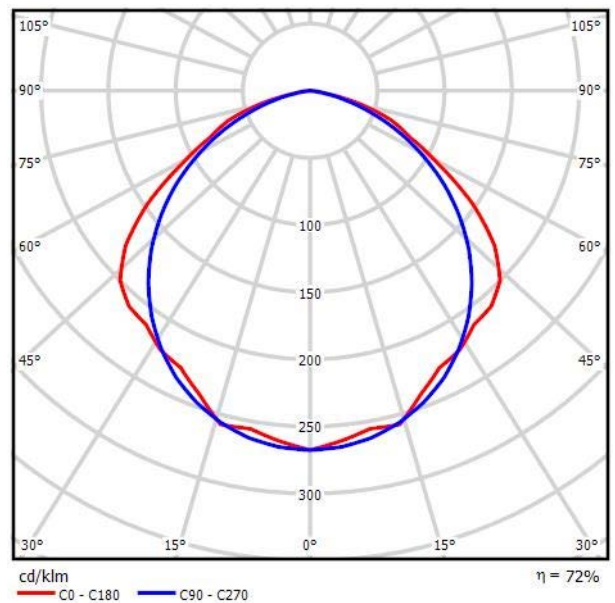


Operator  
Telephone  
Fax  
e-Mail

## BEGHELLI SPA 14833 ACCIAIO T5 RE 280W 14833 ACCIAIO T5 RE 280W / Luminaire Data Sheet

Luminous emittance 1:

See our luminaire catalog for an image of the luminaire.



Luminaire classification according to CIE: 100  
CIE flux code: 49 82 97 100 72

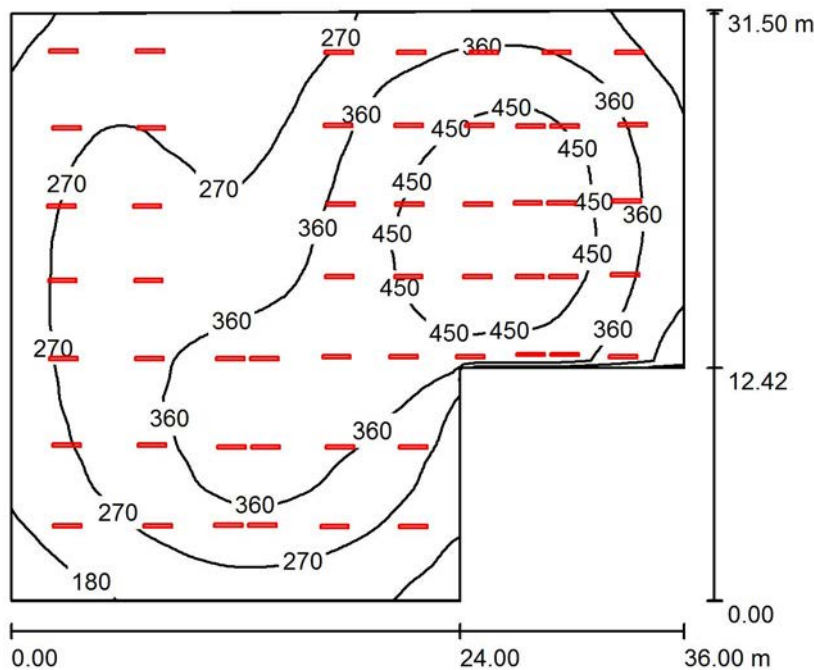
Luminous emittance 1:

| Glare Evaluation According to UGR                                |     |   |      |      |      |      |  |      |      |      |      |  |
|--|-----|---|------|------|------|------|--|------|------|------|------|--|
| Ceiling  |     | 70  | 70   | 50   | 50   | 30   | 70   | 70   | 50   | 50   | 30   |  |
| Walls  |     | 50  | 30   | 50   | 30   | 30   | 50   | 30   | 50   | 30   | 30   |  |
| Floor  |     | 20  | 20   | 20   | 20   | 20   | 20   | 20   | 20   | 20   | 20   |  |
| Room Size<br>X Y   |     | Viewing direction at right angles<br>to lamp axis |      |      |      |      | Viewing direction parallel<br>to lamp axis |      |      |      |      |  |
| 2H   | 2H  | 22.0  | 23.3 | 22.3 | 23.5 | 23.8 | 20.7                                       | 22.0 | 21.0 | 22.3 | 22.5 |  |
|  | 3H  | 23.3  | 24.5 | 23.6 | 24.8 | 25.0 | 22.0                                       | 23.2 | 22.4 | 23.5 | 23.7 |  |
|  | 4H  | 23.8  | 24.9 | 24.1 | 25.1 | 25.4 | 22.4                                       | 23.5 | 22.7 | 23.8 | 24.1 |  |
|  | 6H  | 23.9  | 24.9 | 24.2 | 25.2 | 25.5 | 22.5                                       | 23.6 | 22.9 | 23.9 | 24.2 |  |
|  | 8H  | 23.9  | 24.9 | 24.2 | 25.2 | 25.5 | 22.6                                       | 23.5 | 22.9 | 23.8 | 24.2 |  |
|  | 12H | 23.9  | 24.8 | 24.2 | 25.1 | 25.4 | 22.5                                       | 23.5 | 22.9 | 23.8 | 24.1 |  |
| 4H   | 2H  | 22.5  | 23.6 | 22.8 | 23.9 | 24.1 | 21.5                                       | 22.6 | 21.8 | 22.9 | 23.2 |  |
|  | 3H  | 24.0  | 24.9 | 24.4 | 25.2 | 25.6 | 23.0                                       | 24.0 | 23.4 | 24.3 | 24.6 |  |
|  | 4H  | 24.5  | 25.4 | 24.9 | 25.7 | 26.1 | 23.5                                       | 24.4 | 23.9 | 24.7 | 25.1 |  |
|  | 6H  | 24.7  | 25.4 | 25.1 | 25.8 | 26.2 | 23.8                                       | 24.5 | 24.2 | 24.9 | 25.3 |  |
|  | 8H  | 24.7  | 25.4 | 25.2 | 25.8 | 26.2 | 23.8                                       | 24.5 | 24.3 | 24.9 | 25.3 |  |
|  | 12H | 24.7  | 25.3 | 25.2 | 25.7 | 26.2 | 23.8                                       | 24.4 | 24.3 | 24.8 | 25.3 |  |
| 8H   | 4H  | 24.7  | 25.4 | 25.1 | 25.8 | 26.2 | 23.8                                       | 24.4 | 24.2 | 24.8 | 25.3 |  |
|  | 6H  | 25.0  | 25.5 | 25.4 | 25.9 | 26.4 | 24.1                                       | 24.7 | 24.6 | 25.1 | 25.6 |  |
|  | 8H  | 25.0  | 25.5 | 25.5 | 25.9 | 26.4 | 24.2                                       | 24.7 | 24.7 | 25.1 | 25.6 |  |
|  | 12H | 25.0  | 25.4 | 25.5 | 25.9 | 26.4 | 24.3                                       | 24.6 | 24.7 | 25.1 | 25.6 |  |
|  | 4H  | 24.7  | 25.3 | 25.2 | 25.7 | 26.1 | 23.8                                       | 24.4 | 24.2 | 24.8 | 25.2 |  |
|  | 6H  | 25.0  | 25.4 | 25.5 | 25.9 | 26.4 | 24.2                                       | 24.6 | 24.6 | 25.1 | 25.5 |  |
| 12H  | 8H  | 25.0  | 25.4 | 25.5 | 25.9 | 26.4 | 24.3                                       | 24.7 | 24.8 | 25.1 | 25.6 |  |
|  | 12H | 25.0  | 25.4 | 25.5 | 25.9 | 26.4 | 24.3                                       | 24.7 | 24.8 | 25.1 | 25.6 |  |
| Variation of the observer position for the luminaire distances S |     |   |      |      |      |      |  |      |      |      |      |  |
| S = 1.0H   |     | +0.2 / -0.1                                       |      |      |      |      | +0.1 / -0.2                                |      |      |      |      |  |
| S = 1.5H   |     | +0.5 / -0.7                                       |      |      |      |      | +0.4 / -0.6                                |      |      |      |      |  |
| S = 2.0H   |     | +1.0 / -1.3                                       |      |      |      |      | +0.9 / -1.3                                |      |      |      |      |  |
| Standard table   |     | BK04  |      |      |      |      | BK04                                       |      |      |      |      |  |
| Correction<br>Summand  |     | -2.2  |      |      |      |      | -2.9                                       |      |      |      |      |  |
| Corrected Glare Indices referring to 12300lm Total Luminous Flux |     |   |      |      |      |      |  |      |      |      |      |  |



Operator  
Telephone  
Fax  
e-Mail

## Работно помещение / Summary



Height of Room: 8.500 m, Mounting Height: 8.500 m, Maintenance factor: 0.80

Values in Lux, Scale 1:405

| Surface   | $\rho$ [%] | $E_{av}$ [lx] | $E_{min}$ [lx] | $E_{max}$ [lx] | $u_0$ |
|-----------|------------|---------------|----------------|----------------|-------|
| Workplane | /          | 328           | 125            | 532            | 0.382 |
| Floor     | 20         | 319           | 141            | 502            | 0.441 |
| Ceiling   | 70         | 75            | 48             | 268            | 0.633 |
| Walls (6) | 50         | 180           | 58             | 1512           | /     |

### Workplane:

Height: 0.750 m  
Grid: 64 x 64 Points  
Boundary Zone: 0.000 m

Illuminance Quotient (according to LG7): Walls / Working Plane: 0.549, Ceiling / Working Plane: 0.228.

### Luminaire Parts List

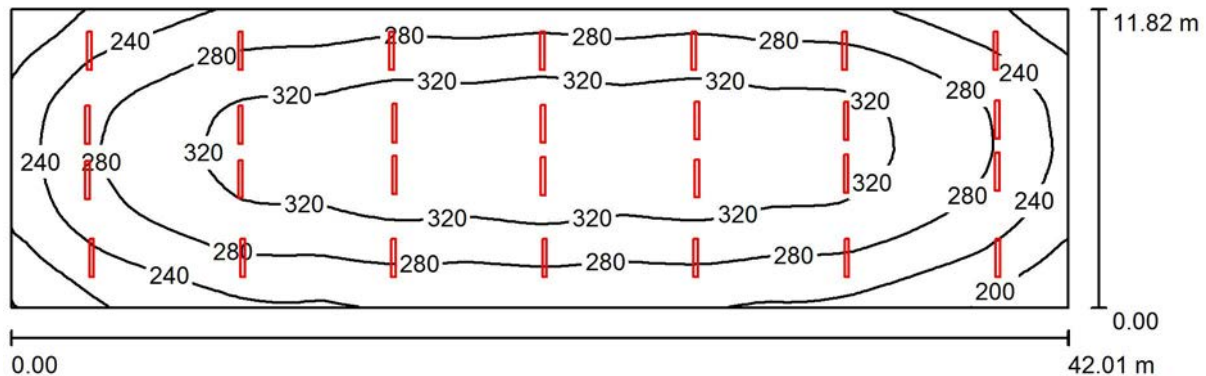
| No.    | Pieces | Designation (Correction Factor)   | $\Phi$ (Luminaire) [lm] | $\Phi$ (Lamps) [lm] | P [W]  |
|--------|--------|---|-------------------------|---------------------|--------|
| 1      | 53     | BEGHELLI SPA 14833 ACCIAIO T5 RE<br>280W 14833 ACCIAIO T5 RE 280W (1.000) | 8855                    | 12300               | 160.0  |
| Total: |        |   | 469336                  | 651900              | 8480.0 |

Specific connected load:  $8.64 \text{ W/m}^2 = 2.63 \text{ W/m}^2/100 \text{ lx}$  (Ground area:  $981.72 \text{ m}^2$ )



Operator  
Telephone  
Fax  
e-Mail

## Навес 1 / Summary



Height of Room: 8.500 m, Mounting Height: 8.500 m, Maintenance factor: 0.80

Values in Lux, Scale 1:301

| Surface   | $\rho$ [%] | $E_{av}$ [lx] | $E_{min}$ [lx] | $E_{max}$ [lx] | $u_0$ |
|-----------|------------|---------------|----------------|----------------|-------|
| Workplane | /          | 285           | 160            | 350            | 0.561 |
| Floor     | 20         | 273           | 166            | 331            | 0.609 |
| Ceiling   | 70         | 72            | 58             | 97             | 0.811 |
| Walls (4) | 50         | 171           | 66             | 360            | /     |

**Workplane:**

Height: 0.750 m  
Grid: 64 x 32 Points  
Boundary Zone: 0.000 m

Illuminance Quotient (according to LG7): Walls / Working Plane: 0.609, Ceiling / Working Plane: 0.251.

**Luminaire Parts List**

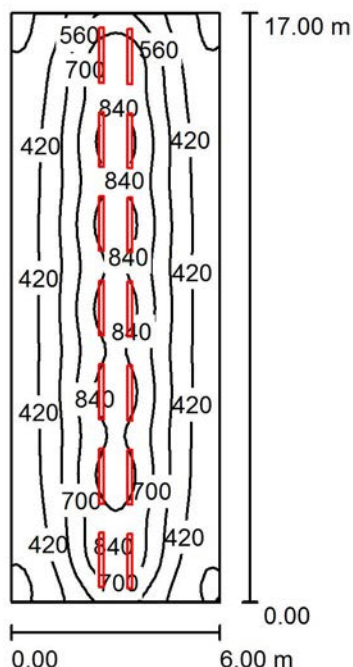
| No.    | Pieces | Designation (Correction Factor)   | $\Phi$ (Luminaire) [lm] | $\Phi$ (Lamps) [lm] | P [W]  |
|--------|--------|---|-------------------------|---------------------|--------|
| 1      | 28     | BEGHELLI SPA 14833 ACCIAIO T5 RE<br>280W 14833 ACCIAIO T5 RE 280W (1.000) | 8855                    | 12300               | 160.0  |
| Total: |        |   | 247951                  | 344400              | 4480.0 |

Specific connected load:  $9.02 \text{ W/m}^2 = 3.16 \text{ W/m}^2/100 \text{ lx}$  (Ground area:  $496.60 \text{ m}^2$ )



Operator  
Telephone  
Fax  
e-Mail

## Кабинка / Summary



Height of Room: 3.000 m, Mounting Height: 2.600 m, Maintenance factor: 0.67

Values in Lux, Scale 1:219

| Surface   | $\rho$ [%] | $E_{av}$ [lx] | $E_{min}$ [lx] | $E_{max}$ [lx] | $u_0$ |
|-----------|------------|---------------|----------------|----------------|-------|
| Workplane | /          | 570           | 235            | 929            | 0.412 |
| Floor     | 20         | 500           | 267            | 687            | 0.534 |
| Ceiling   | 70         | 142           | 109            | 160            | 0.771 |
| Walls (4) | 50         | 331           | 140            | 814            | /     |

### Workplane:

Height: 0.750 m  
Grid: 32 x 64 Points  
Boundary Zone: 0.000 m

Illuminance Quotient (according to LG7): Walls / Working Plane: 0.578, Ceiling / Working Plane: 0.249.

### Luminaire Parts List

| No.    | Pieces | Designation (Correction Factor)  | $\Phi$ (Luminaire) [lm] | $\Phi$ (Lamps) [lm] | P [W]  |
|--------|--------|----------------------------------|-------------------------|---------------------|--------|
| 1      | 14     | ESSYSTEM 2405000 CO2 249 (1.000) | 7279                    | 8600                | 106.0  |
| Total: |        |                                  | 101902                  | 120400              | 1484.0 |

Specific connected load:  $14.55 \text{ W/m}^2 = 2.55 \text{ W/m}^2/100 \text{ lx}$  (Ground area:  $102.00 \text{ m}^2$ )